

K-tech Kleening Systems, Inc

Insured: Town of Newbold
Property: 4608 Apperson Drive
Rhineland, WI

Home: (715) 499-1892
E-mail: dkroll@newboldtown.com

Estimator: Scott R. Klemm
Company: K-tech Kleening Systems, Inc.
Business: 7710 Technology Drive
Weston, WI

Business: (715) 355-1369

Claim Number:

Policy Number:

Type of Loss:

Coverage	Deductible	Policy Limit
Dwelling	\$0.00	\$0.00
Other Structures	\$0.00	\$0.00
Contents	\$0.00	\$0.00

Date of Loss:
Date Inspected: 10/20/2021 12:00 AM

Date Received: 10/20/2021 12:00 AM
Date Entered: 10/22/2021 3:17 PM

Price List: WIWS8X_OCT21
Restoration/Service/Remodel
Estimate: 2021-10-22-1517

Depreciate Material: Yes
Depreciate Non-material: Yes
Depreciate Removal: No
Depreciate O&P: No
Depreciate Taxes: Yes

This is an ESTIMATE ONLY. Scope of loss may change once project has begun. If scope or pricing changes, a change order will be written out and signed by property management prior to work being done.

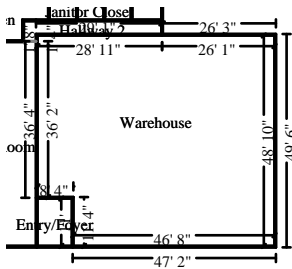
K-tech Kleening Systems, Inc

2021-10-22-1517

Main Level

Main Level

CAT	SEL	ACT DESCRIPTION	REMOVE	REPLACE	TAX	TOTAL
	CALC	QTY				
1. WTR	ESRVD	+ Emergency service call - during business hours				
	1	1.00 EA	0.00+	150.96 =	0.00	150.96
3. WTR	NAFAN>	+ Neg. air fan/Air scrub.-Large (per 24 hr period)-No monit.				
	168	168.00 DA	0.00+	107.35 =	0.00	18,034.80
8 air scrubbers for 21 days.						
6. HMR	FHEPA>	+ Add for HEPA filter (for neg. air machine/vacuum - Large)				
	8	8.00 EA	0.00+	289.01 =	0.00	2,312.08
8. EQU	BLIFT	+ Boom lift - 30'-45' reach (per day)				
	0	0.00 DA [*]			0.00	0.00
This is an OPEN ITEM. Cost will be actual rental plus 25%.						
9. DMO	DUMP>>	- Dumpster load - Approx. 40 yards, 7-8 tons of debris				
	0	0.00 EA [*]			0.00	0.00
Open item - cost will be determined by number of dumpsters used and cost of weight.						
69. CLN	DCTV	+ Clean ductwork - Interior (PER REGISTER)				
	10	10.00 EA [*]	0.00+	45.00 =	0.00	450.00
115. HMR	EQDH	+ Equipment decontamination charge - HVY, per piece of equip				
	11	11.00 EA	0.00+	58.66 =	0.00	645.26
8 air scrubbers and 3 HEPA vacs.						
Total: Main Level					0.00	21,593.10



Warehouse

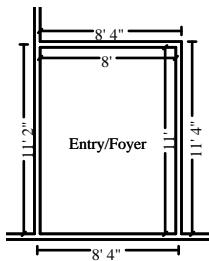
Height: 11'

2284.33 SF Walls	2591.39 SF Ceiling
4875.72 SF Walls & Ceiling	2591.39 SF Floor
287.93 SY Flooring	207.67 LF Floor Perimeter
207.67 LF Ceil. Perimeter	

CAT	SEL	ACT DESCRIPTION	REMOVE	REPLACE	TAX	TOTAL
	CALC	QTY				
52. ACT	ST	- Remove Suspended ceiling tile - 2' x 4'				
	C	2591.39 SF	0.23+	0.00 =	0.00	596.02
139. ACT	SG	- Remove Suspended ceiling grid - 2' x 4'				
	C	2591.39 SF	0.21+	0.00 =	0.00	544.19
64. INS	BT10	- Remove Batt insulation - 10" - R30 - unfaced batt				
	C	2591.39 SF	0.41+	0.00 =	0.00	1,062.47
50. HMR	HEPAVAS	+ HEPA Vacuuming - Detailed - (PER SF)				
	WC+F	7467.11 SF	0.00+	0.81 =	0.00	6,048.36

CONTINUED - Warehouse

CAT	SEL CALC	ACT DESCRIPTION QTY	REMOVE	REPLACE	TAX	TOTAL
51. HMR	CLNAV+	+ Clean more than the walls and ceiling - Heavy				
	WC+F	7467.11 SF	0.00+	0.67 =	0.00	5,002.96
95. HMR	GRM	+ Apply anti-microbial agent to the floor				
	F	2591.39 SF	0.00+	0.29 =	0.00	751.50
Totals: Warehouse					0.00	14,005.50



Entry/Foyer

Height: 9'

342.00 SF Walls	88.00 SF Ceiling
430.00 SF Walls & Ceiling	88.00 SF Floor
9.78 SY Flooring	38.00 LF Floor Perimeter
38.00 LF Ceil. Perimeter	

CAT	SEL CALC	ACT DESCRIPTION QTY	REMOVE	REPLACE	TAX	TOTAL
98. INS	BT10	- Remove Batt insulation - 10" - R30 - unfaced batt				
	C	88.00 SF	0.41+	0.00 =	0.00	36.08
26. HMR	HEPAVAS	+ HEPA Vacuuming - Detailed - (PER SF)				
	WC+F	518.00 SF	0.00+	0.81 =	0.00	419.58
27. HMR	CLNAV+	+ Clean more than the walls and ceiling - Heavy				
	WC+F	518.00 SF	0.00+	0.67 =	0.00	347.06
96. HMR	GRM	+ Apply anti-microbial agent to the floor				
	F	88.00 SF	0.00+	0.29 =	0.00	25.52
Totals: Entry/Foyer					0.00	828.24

K-tech Kleening Systems, Inc



Meeting Room

Height: 10'

1323.33 SF Walls	1004.44 SF Ceiling
2327.78 SF Walls & Ceiling	1004.44 SF Floor
111.60 SY Flooring	132.33 LF Floor Perimeter
132.33 LF Ceil. Perimeter	

Missing Wall

2' 10" X 10'

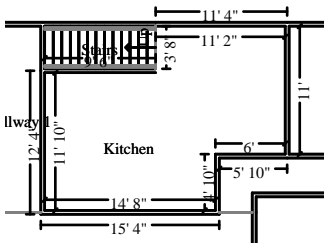
Opens into HALLWAY_2

Missing Wall

3' 10" X 10'

Opens into HALLWAY_1

CAT	SEL	ACT DESCRIPTION	REMOVE	REPLACE	TAX	TOTAL
	CALC	QTY				
54. ACT	ST	- Remove Suspended ceiling tile - 2' x 4'				
	C	1004.44 SF	0.23+	0.00 =	0.00	231.02
140. ACT	SG	- Remove Suspended ceiling grid - 2' x 4'				
	C	1004.44 SF	0.21+	0.00 =	0.00	210.93
48. HMR	HEPAVAS	+ HEPA Vacuuming - Detailed - (PER SF)				
	WC+F	3332.22 SF	0.00+	0.81 =	0.00	2,699.10
49. HMR	CLNAV+	+ Clean more than the walls and ceiling - Heavy				
	WC+F	3332.22 SF	0.00+	0.67 =	0.00	2,232.59
67. INS	BT10	- Remove Batt insulation - 10" - R30 - unfaced batt				
	C	1004.44 SF	0.41+	0.00 =	0.00	411.82
97. HMR	GRM	+ Apply anti-microbial agent to the floor				
	F	1004.44 SF	0.00+	0.29 =	0.00	291.29
Totals: Meeting Room					0.00	6,076.75



Kitchen

Height: 10'

690.00 SF Walls	260.09 SF Ceiling
950.09 SF Walls & Ceiling	260.09 SF Floor
28.90 SY Flooring	69.00 LF Floor Perimeter
69.00 LF Ceil. Perimeter	

Missing Wall

3' 8" X 10'

Opens into STAIRS

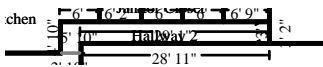
CAT	SEL	ACT DESCRIPTION	REMOVE	REPLACE	TAX	TOTAL
	CALC	QTY				
55. ACT	ST	- Remove Suspended ceiling tile - 2' x 4'				
	C	260.09 SF	0.23+	0.00 =	0.00	59.82
141. ACT	SG	- Remove Suspended ceiling grid - 2' x 4'				
	C	260.09 SF	0.21+	0.00 =	0.00	54.62
68. INS	BT10	- Remove Batt insulation - 10" - R30 - unfaced batt				
	C	260.09 SF	0.41+	0.00 =	0.00	106.64

CONTINUED - Kitchen

CAT	SEL CALC	ACT DESCRIPTION QTY	REMOVE	REPLACE	TAX	TOTAL
46. HMR	HEPAVAS WC+F	+ HEPA Vacuuming - Detailed - (PER SF) 1210.18 SF	0.00+	0.81 =	0.00	980.25
47. HMR	CLNAV+ WC+F	+ Clean more than the walls and ceiling - Heavy 1210.18 SF	0.00+	0.67 =	0.00	810.82
99. HMR	GRM F	+ Apply anti-microbial agent to the floor 260.09 SF	0.00+	0.29 =	0.00	75.43
129. CLN	UP 30	+ Clean cabinetry - upper - inside and out 30.00 LF	0.00+	13.12 =	0.00	393.60
130. CLN	LOW 25	+ Clean cabinetry - lower - inside and out 25.00 LF	0.00+	13.12 =	0.00	328.00
131. CLN	CTF+ 88.50	+ Clean countertop - Heavy 88.50 SF	0.00+	0.86 =	0.00	76.11
133. CLN	SNKDFA+ 2	+ Clean sink - double and faucet - Heavy 2.00 EA	0.00+	31.87 =	0.00	63.74
134. CLN	RGX 1	+ Clean range - exterior 1.00 EA	0.00+	28.16 =	0.00	28.16
136. CLN	RFX+ 1	+ Clean refrigerator - exterior - Heavy 1.00 EA	0.00+	25.56 =	0.00	25.56
Totals: Kitchen					0.00	3,002.75

Hallway 2

Height: 10'



705.00 SF Walls	100.47 SF Ceiling
805.47 SF Walls & Ceiling	100.47 SF Floor
11.16 SY Flooring	70.50 LF Floor Perimeter
70.50 LF Ceil. Perimeter	

Missing Wall

2' 10" X 10'

Opens into MEETING_ROOM

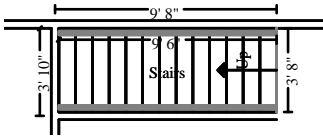
CAT	SEL CALC	ACT DESCRIPTION QTY	REMOVE	REPLACE	TAX	TOTAL
56. ACT	ST C	- Remove Suspended ceiling tile - 2' x 4' 100.47 SF	0.23+	0.00 =	0.00	23.11
142. ACT	SG C	- Remove Suspended ceiling grid - 2' x 4' 100.47 SF	0.21+	0.00 =	0.00	21.10
72. INS	BT10 C	- Remove Batt insulation - 10" - R30 - unfaced batt 100.47 SF	0.41+	0.00 =	0.00	41.19

CONTINUED - Hallway 2

CAT	SEL CALC	ACT DESCRIPTION QTY	REMOVE	REPLACE	TAX	TOTAL
44. HMR	HEPAVAS WC+F	+ HEPA Vacuuming - Detailed - (PER SF) 905.94 SF	0.00+	0.81 =	0.00	733.81
45. HMR	CLNAV+ WC+F	+ Clean more than the walls and ceiling - Heavy 905.94 SF	0.00+	0.67 =	0.00	606.98
100. HMR	GRM F	+ Apply anti-microbial agent to the floor 100.47 SF	0.00+	0.29 =	0.00	29.14
Totals: Hallway 2					0.00	1,455.33

Stairs

Height: 17'



267.65 SF Walls	34.95 SF Ceiling
302.60 SF Walls & Ceiling	69.94 SF Floor
7.77 SY Flooring	29.02 LF Floor Perimeter
22.73 LF Ceil. Perimeter	

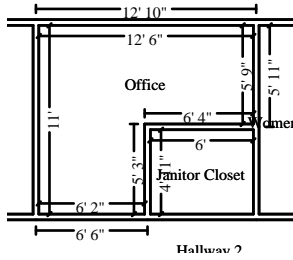
Missing Wall

3' 8" X 17'

Opens into KITCHEN

CAT	SEL CALC	ACT DESCRIPTION QTY	REMOVE	REPLACE	TAX	TOTAL
57. ACT	ST C	- Remove Suspended ceiling tile - 2' x 4' 34.95 SF	0.23+	0.00 =	0.00	8.04
143. ACT	SG C	- Remove Suspended ceiling grid - 2' x 4' 34.95 SF	0.21+	0.00 =	0.00	7.34
73. INS	BT10 C	- Remove Batt insulation - 10" - R30 - unfaced batt 34.95 SF	0.41+	0.00 =	0.00	14.33
32. HMR	HEPAVAS WC+F	+ HEPA Vacuuming - Detailed - (PER SF) 372.54 SF	0.00+	0.81 =	0.00	301.76
33. HMR	CLNAV+ WC+F	+ Clean more than the walls and ceiling - Heavy 372.54 SF	0.00+	0.67 =	0.00	249.60
101. HMR	GRM F	+ Apply anti-microbial agent to the floor 69.94 SF	0.00+	0.29 =	0.00	20.28
Totals: Stairs					0.00	601.35

K-tech Kleening Systems, Inc

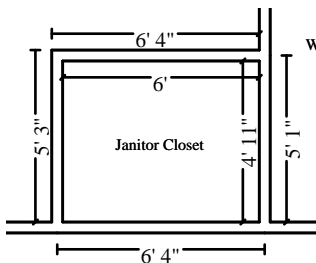


Office

Height: 10'

470.00 SF Walls	104.25 SF Ceiling
574.25 SF Walls & Ceiling	104.25 SF Floor
11.58 SY Flooring	47.00 LF Floor Perimeter
47.00 LF Ceil. Perimeter	

CAT	SEL	ACT DESCRIPTION	REMOVE	REPLACE	TAX	TOTAL
	CALC	QTY				
58. ACT	ST	- Remove Suspended ceiling tile - 2' x 4'				
	C	104.25 SF	0.23+	0.00 =	0.00	23.98
144. ACT	SG	- Remove Suspended ceiling grid - 2' x 4'				
	C	104.25 SF	0.21+	0.00 =	0.00	21.89
74. INS	BT10	- Remove Batt insulation - 10" - R30 - unfaced batt				
	C	104.25 SF	0.41+	0.00 =	0.00	42.74
42. HMR	HEPAVAS	+ HEPA Vacuuming - Detailed - (PER SF)				
	WC+F	678.50 SF	0.00+	0.81 =	0.00	549.59
43. HMR	CLNAV+	+ Clean more than the walls and ceiling - Heavy				
	WC+F	678.50 SF	0.00+	0.67 =	0.00	454.60
102. HMR	GRM	+ Apply anti-microbial agent to the floor				
	F	104.25 SF	0.00+	0.29 =	0.00	30.23
Totals: Office					0.00	1,123.03



Janitor Closet

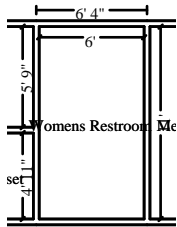
Height: 8'

174.67 SF Walls	29.50 SF Ceiling
204.17 SF Walls & Ceiling	29.50 SF Floor
3.28 SY Flooring	21.83 LF Floor Perimeter
21.83 LF Ceil. Perimeter	

CAT	SEL	ACT DESCRIPTION	REMOVE	REPLACE	TAX	TOTAL
	CALC	QTY				
76. ACT	ST	- Remove Suspended ceiling tile - 2' x 4'				
	C	29.50 SF	0.23+	0.00 =	0.00	6.79
75. INS	BT10	- Remove Batt insulation - 10" - R30 - unfaced batt				
	C	29.50 SF	0.41+	0.00 =	0.00	12.10
40. HMR	HEPAVAS	+ HEPA Vacuuming - Detailed - (PER SF)				
	WC+F	233.67 SF	0.00+	0.81 =	0.00	189.27
41. HMR	CLNAV+	+ Clean more than the walls and ceiling - Heavy				
	WC+F	233.67 SF	0.00+	0.67 =	0.00	156.56
103. HMR	GRM	+ Apply anti-microbial agent to the floor				
	F	29.50 SF	0.00+	0.29 =	0.00	8.56

CONTINUED - Janitor Closet

CAT	SEL	ACT DESCRIPTION	REMOVE	REPLACE	TAX	TOTAL
	CALC	QTY				
145. ACT	SG	- Remove Suspended ceiling grid - 2' x 4'				
	C	29.50 SF	0.21+	0.00 =	0.00	6.20
Totals: Janitor Closet					0.00	379.48



Womens Restroom

Height: 10'

340.00 SF Walls	66.00 SF Ceiling
406.00 SF Walls & Ceiling	66.00 SF Floor
7.33 SY Flooring	34.00 LF Floor Perimeter
34.00 LF Ceil. Perimeter	

CAT	SEL	ACT DESCRIPTION	REMOVE	REPLACE	TAX	TOTAL
	CALC	QTY				
59. ACT	ST	- Remove Suspended ceiling tile - 2' x 4'				
	C	66.00 SF	0.23+	0.00 =	0.00	15.18
38. HMR	HEPAVAS	+ HEPA Vacuuming - Detailed - (PER SF)				
	WC+F	472.00 SF	0.00+	0.81 =	0.00	382.32
39. HMR	CLNAV+	+ Clean more than the walls and ceiling - Heavy				
	WC+F	472.00 SF	0.00+	0.67 =	0.00	316.24
77. INS	BT10	- Remove Batt insulation - 10" - R30 - unfaced batt				
	C	66.00 SF	0.41+	0.00 =	0.00	27.06
104. HMR	GRM	+ Apply anti-microbial agent to the floor				
	F	66.00 SF	0.00+	0.29 =	0.00	19.14
116. CLN	SNK+	+ Clean sink - Heavy				
	1	1.00 EA	0.00+	15.95 =	0.00	15.95
117. CLN	FAU+	+ Clean sink faucet - Heavy				
	1	1.00 EA	0.00+	12.16 =	0.00	12.16
118. CLN	TLT+	+ Clean toilet - Heavy				
	2	2.00 EA	0.00+	26.58 =	0.00	53.16
119. CLN	TLTS+	+ Clean toilet seat - Heavy				
	2	2.00 EA	0.00+	5.57 =	0.00	11.14
120. CLN	TPD+	+ Clean toilet paper dispenser - Heavy				
	1	1.00 EA	0.00+	8.42 =	0.00	8.42
121. CLN	SPD+	+ Clean soap/hand sanitizer dispenser - Heavy				
	1	1.00 EA	0.00+	8.18 =	0.00	8.18
146. ACT	SG	- Remove Suspended ceiling grid - 2' x 4'				
	C	66.00 SF	0.21+	0.00 =	0.00	13.86

CONTINUED - Womens Restroom

CAT	SEL CALC	ACT DESCRIPTION QTY	REMOVE	REPLACE	TAX	TOTAL
Totals: Womens Restroom					0.00	882.81



Mens Restroom

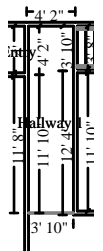
Height: 10'

355.00 SF Walls	74.25 SF Ceiling
429.25 SF Walls & Ceiling	74.25 SF Floor
8.25 SY Flooring	35.50 LF Floor Perimeter
35.50 LF Ceil. Perimeter	

CAT	SEL CALC	ACT DESCRIPTION QTY	REMOVE	REPLACE	TAX	TOTAL
60. ACT	ST C	- Remove Suspended ceiling tile - 2' x 4' 74.25 SF	0.23+	0.00 =	0.00	17.08
78. INS	BT10 C	- Remove Batt insulation - 10" - R30 - unfaced batt 74.25 SF	0.41+	0.00 =	0.00	30.44
36. HMR	HEPAVAS WC+F	+ HEPA Vacuuming - Detailed - (PER SF) 503.50 SF	0.00+	0.81 =	0.00	407.84
37. HMR	CLNAV+ WC+F	+ Clean more than the walls and ceiling - Heavy 503.50 SF	0.00+	0.67 =	0.00	337.35
105. HMR	GRM F	+ Apply anti-microbial agent to the floor 74.25 SF	0.00+	0.29 =	0.00	21.53
122. CLN	SNK+ 1	+ Clean sink - Heavy 1.00 EA	0.00+	15.95 =	0.00	15.95
123. CLN	FAU+ 1	+ Clean sink faucet - Heavy 1.00 EA	0.00+	12.16 =	0.00	12.16
124. CLN	TLT+ 1	+ Clean toilet - Heavy 1.00 EA	0.00+	26.58 =	0.00	26.58
125. CLN	TLTS+ 1	+ Clean toilet seat - Heavy 1.00 EA	0.00+	5.57 =	0.00	5.57
126. CLN	TPD+ 1	+ Clean toilet paper dispenser - Heavy 1.00 EA	0.00+	8.42 =	0.00	8.42
127. CLN	SPD+ 1	+ Clean soap/hand sanitizer dispenser - Heavy 1.00 EA	0.00+	8.18 =	0.00	8.18
128. CLN	UR+ 1	+ Clean urinal - Heavy 1.00 EA	0.00+	25.69 =	0.00	25.69
147. ACT	SG C	- Remove Suspended ceiling grid - 2' x 4' 74.25 SF	0.21+	0.00 =	0.00	15.59

CONTINUED - Mens Restroom

CAT	SEL CALC	ACT DESCRIPTION QTY	REMOVE	REPLACE	TAX	TOTAL
Totals: Mens Restroom					0.00	932.38



Hallway 1

Height: 10'

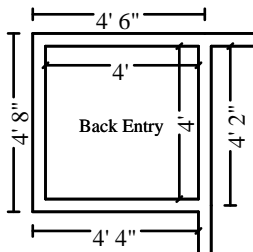
360.00 SF Walls	61.33 SF Ceiling
421.33 SF Walls & Ceiling	61.33 SF Floor
6.81 SY Flooring	36.00 LF Floor Perimeter
36.00 LF Ceil. Perimeter	

Missing Wall

3' 10" X 10'

Opens into MEETING_ROOM

CAT	SEL CALC	ACT DESCRIPTION QTY	REMOVE	REPLACE	TAX	TOTAL
61. ACT	ST	- Remove Suspended ceiling tile - 2' x 4'				
	C	61.33 SF	0.23+	0.00 =	0.00	14.11
79. INS	BT10	- Remove Batt insulation - 10" - R30 - unfaced batt				
	C	61.33 SF	0.41+	0.00 =	0.00	25.15
34. HMR	HEPAVAS	+ HEPA Vacuuming - Detailed - (PER SF)				
	WC+F	482.67 SF	0.00+	0.81 =	0.00	390.96
35. HMR	CLNAV+	+ Clean more than the walls and ceiling - Heavy				
	WC+F	482.67 SF	0.00+	0.67 =	0.00	323.39
106. HMR	GRM	+ Apply anti-microbial agent to the floor				
	F	61.33 SF	0.00+	0.29 =	0.00	17.79
148. ACT	SG	- Remove Suspended ceiling grid - 2' x 4'				
	C	61.33 SF	0.21+	0.00 =	0.00	12.88
Totals: Hallway 1					0.00	784.28



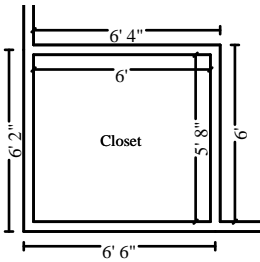
Back Entry

Height: 10'

160.00 SF Walls	16.00 SF Ceiling
176.00 SF Walls & Ceiling	16.00 SF Floor
1.78 SY Flooring	16.00 LF Floor Perimeter
16.00 LF Ceil. Perimeter	

K-tech Kleening Systems, Inc

CAT	SEL	ACT DESCRIPTION	REMOVE	REPLACE	TAX	TOTAL
	CALC	QTY				
62. ACT	ST	- Remove Suspended ceiling tile - 2' x 4'				
	C	16.00 SF	0.23+	0.00 =	0.00	3.68
80. INS	BT10	- Remove Batt insulation - 10" - R30 - unfaced batt				
	C	16.00 SF	0.41+	0.00 =	0.00	6.56
30. HMR	HEPAVAS	+ HEPA Vacuuming - Detailed - (PER SF)				
	WC+F	192.00 SF	0.00+	0.81 =	0.00	155.52
31. HMR	CLNAV+	+ Clean more than the walls and ceiling - Heavy				
	WC+F	192.00 SF	0.00+	0.67 =	0.00	128.64
107. HMR	GRM	+ Apply anti-microbial agent to the floor				
	F	16.00 SF	0.00+	0.29 =	0.00	4.64
149. ACT	SG	- Remove Suspended ceiling grid - 2' x 4'				
	C	16.00 SF	0.21+	0.00 =	0.00	3.36
Totals: Back Entry					0.00	302.40



Closet

Height: 10'

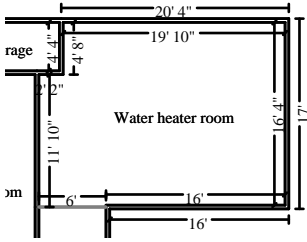
233.33 SF Walls	34.00 SF Ceiling
267.33 SF Walls & Ceiling	34.00 SF Floor
3.78 SY Flooring	23.33 LF Floor Perimeter
23.33 LF Ceil. Perimeter	

CAT	SEL	ACT DESCRIPTION	REMOVE	REPLACE	TAX	TOTAL
	CALC	QTY				
63. ACT	ST	- Remove Suspended ceiling tile - 2' x 4'				
	C	34.00 SF	0.23+	0.00 =	0.00	7.82
150. ACT	SG	- Remove Suspended ceiling grid - 2' x 4'				
	C	34.00 SF	0.21+	0.00 =	0.00	7.14
81. INS	BT10	- Remove Batt insulation - 10" - R30 - unfaced batt				
	C	34.00 SF	0.41+	0.00 =	0.00	13.94
28. HMR	HEPAVAS	+ HEPA Vacuuming - Detailed - (PER SF)				
	WC+F	301.33 SF	0.00+	0.81 =	0.00	244.08
29. HMR	CLNAV+	+ Clean more than the walls and ceiling - Heavy				
	WC+F	301.33 SF	0.00+	0.67 =	0.00	201.89
94. HMR	GRM	+ Apply anti-microbial agent to the floor				
	F	34.00 SF	0.00+	0.29 =	0.00	9.86
Totals: Closet					0.00	484.73

Total: Main Level

0.00 52,452.13

Basement



Water heater room

Height: 8'

566.67 SF Walls	350.22 SF Ceiling
916.89 SF Walls & Ceiling	350.22 SF Floor
38.91 SY Flooring	70.83 LF Floor Perimeter
70.83 LF Ceil. Perimeter	

Missing Wall

6' X 8'

Opens into HALLWAY

CAT	SEL	ACT DESCRIPTION	REMOVE	REPLACE	TAX	TOTAL
	CALC	QTY				
10. HMR	HEPAVAS	+ HEPA Vacuuming - Detailed - (PER SF)				
	WC+F	1267.11 SF	0.00+	0.81 =	0.00	1,026.36
19. HMR	CLNAV+	+ Clean more than the walls and ceiling - Heavy				
	WC+F	1267.11 SF	0.00+	0.67 =	0.00	848.96
108. HMR	GRM	+ Apply anti-microbial agent to the floor				
	F	350.22 SF	0.00+	0.29 =	0.00	101.56
138. CLN	WH+	+ Clean water heater - Heavy				
	1	1.00 EA	0.00+	25.11 =	0.00	25.11
Totals: Water heater room					0.00	2,001.99

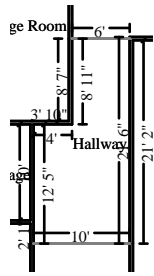


Misc. Storage Room

Height: 8'

550.67 SF Walls	285.83 SF Ceiling
836.50 SF Walls & Ceiling	285.83 SF Floor
31.76 SY Flooring	68.83 LF Floor Perimeter
68.83 LF Ceil. Perimeter	

CAT	SEL	ACT DESCRIPTION	REMOVE	REPLACE	TAX	TOTAL
	CALC	QTY				
11. HMR	HEPAVAS	+ HEPA Vacuuming - Detailed - (PER SF)				
	WC+F	1122.33 SF	0.00+	0.81 =	0.00	909.09
20. HMR	CLNAV+	+ Clean more than the walls and ceiling - Heavy				
	WC+F	1122.33 SF	0.00+	0.67 =	0.00	751.96
109. HMR	GRM	+ Apply anti-microbial agent to the floor				
	F	285.83 SF	0.00+	0.29 =	0.00	82.89
Totals: Misc. Storage Room					0.00	1,743.94



Hallway

Height: 8'

374.67 SF Walls	177.67 SF Ceiling
552.33 SF Walls & Ceiling	177.67 SF Floor
19.74 SY Flooring	46.83 LF Floor Perimeter
46.83 LF Ceil. Perimeter	

Missing Wall

6' X 8'

Opens into WATER_HEATER

Missing Wall

10' X 8'

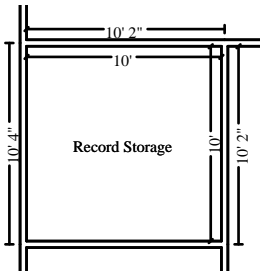
Opens into STORAGE_AREA

CAT	SEL	ACT DESCRIPTION	REMOVE	REPLACE	TAX	TOTAL
	CALC	QTY				
12. HMR	HEPAVAS	+ HEPA Vacuuming - Detailed - (PER SF)				
	WC+F	730.00 SF	0.00+	0.81 =	0.00	591.30
21. HMR	CLNAV+	+ Clean more than the walls and ceiling - Heavy				
	WC+F	730.00 SF	0.00+	0.67 =	0.00	489.10
110. HMR	GRM	+ Apply anti-microbial agent to the floor				
	F	177.67 SF	0.00+	0.29 =	0.00	51.52

Totals: Hallway

0.00

1,131.92



Record Storage

Height: 8'

320.00 SF Walls	100.00 SF Ceiling
420.00 SF Walls & Ceiling	100.00 SF Floor
11.11 SY Flooring	40.00 LF Floor Perimeter
40.00 LF Ceil. Perimeter	

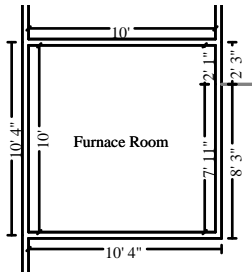
CAT	SEL	ACT DESCRIPTION	REMOVE	REPLACE	TAX	TOTAL
	CALC	QTY				
13. HMR	HEPAVAS	+ HEPA Vacuuming - Detailed - (PER SF)				
	WC+F	520.00 SF	0.00+	0.81 =	0.00	421.20
22. HMR	CLNAV+	+ Clean more than the walls and ceiling - Heavy				
	WC+F	520.00 SF	0.00+	0.67 =	0.00	348.40
111. HMR	GRM	+ Apply anti-microbial agent to the floor				
	F	100.00 SF	0.00+	0.29 =	0.00	29.00

Totals: Record Storage

0.00

798.60

K-tech Kleening Systems, Inc

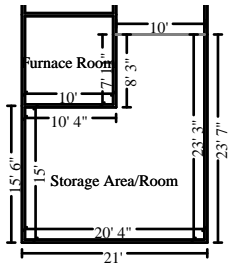


Furnace Room

Height: 8'

320.00 SF Walls	100.00 SF Ceiling
420.00 SF Walls & Ceiling	100.00 SF Floor
11.11 SY Flooring	40.00 LF Floor Perimeter
40.00 LF Ceil. Perimeter	

CAT	SEL	ACT DESCRIPTION	REMOVE	REPLACE	TAX	TOTAL
	CALC	QTY				
14. HMR	HEPAVAS	+ HEPA Vacuuming - Detailed - (PER SF)				
	WC+F	520.00 SF	0.00+	0.81 =	0.00	421.20
23. HMR	CLNAV+	+ Clean more than the walls and ceiling - Heavy				
	WC+F	520.00 SF	0.00+	0.67 =	0.00	348.40
112. HMR	GRM	+ Apply anti-microbial agent to the floor				
	F	100.00 SF	0.00+	0.29 =	0.00	29.00
137. CLN	FRFA>	+ Clean furnace - forced air - Large				
	1	1.00 EA	0.00+	75.74 =	0.00	75.74
Totals: Furnace Room					0.00	874.34



Storage Area/Room

Height: 8'

617.33 SF Walls	387.50 SF Ceiling
1004.83 SF Walls & Ceiling	387.50 SF Floor
43.06 SY Flooring	77.17 LF Floor Perimeter
77.17 LF Ceil. Perimeter	

Missing Wall

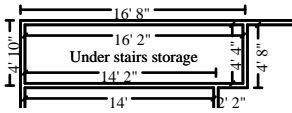
10' X 8'

Opens into HALLWAY

CAT	SEL	ACT DESCRIPTION	REMOVE	REPLACE	TAX	TOTAL
	CALC	QTY				
15. HMR	HEPAVAS	+ HEPA Vacuuming - Detailed - (PER SF)				
	WC+F	1392.33 SF	0.00+	0.81 =	0.00	1,127.79
24. HMR	CLNAV+	+ Clean more than the walls and ceiling - Heavy				
	WC+F	1392.33 SF	0.00+	0.67 =	0.00	932.86
113. HMR	GRM	+ Apply anti-microbial agent to the floor				
	F	387.50 SF	0.00+	0.29 =	0.00	112.38
Totals: Storage Area/Room					0.00	2,173.03

Under stairs storage

Height: 8'



328.00 SF Walls	70.06 SF Ceiling
398.06 SF Walls & Ceiling	70.06 SF Floor
7.78 SY Flooring	41.00 LF Floor Perimeter
41.00 LF Ceil. Perimeter	

CAT	SEL	ACT DESCRIPTION	REMOVE	REPLACE	TAX	TOTAL
	CALC	QTY				
16. HMR	HEPAVAS	+ HEPA Vacuuming - Detailed - (PER SF)				
	WC+F	468.11 SF	0.00+	0.81 =	0.00	379.17
25. HMR	CLNAV+	+ Clean more than the walls and ceiling - Heavy				
	WC+F	468.11 SF	0.00+	0.67 =	0.00	313.63
114. HMR	GRM	+ Apply anti-microbial agent to the floor				
	F	70.06 SF	0.00+	0.29 =	0.00	20.32
Totals: Under stairs storage					0.00	713.12
Total: Basement					0.00	9,436.94
Line Item Totals: 2021-10-22-1517					0.00	61,889.07

Grand Total Areas:

10,782.65 SF Walls	5,935.96 SF Ceiling	16,718.61 SF Walls and Ceiling
5,970.95 SF Floor	663.44 SY Flooring	1,144.85 LF Floor Perimeter
0.00 SF Long Wall	0.00 SF Short Wall	1,138.57 LF Ceil. Perimeter
5,970.95 Floor Area	6,208.97 Total Area	10,381.34 Interior Wall Area
5,008.39 Exterior Wall Area	480.80 Exterior Perimeter of Walls	
0.00 Surface Area	0.00 Number of Squares	0.00 Total Perimeter Length
0.00 Total Ridge Length	0.00 Total Hip Length	

Coverage	Item Total	%	ACV Total	%
Dwelling	61,863.51	99.96%	61,863.51	99.96%
Other Structures	0.00	0.00%	0.00	0.00%
Contents	25.56	0.04%	25.56	0.04%
Total	61,889.07	100.00%	61,889.07	100.00%

Summary for Dwelling

Line Item Total	61,863.51
Replacement Cost Value	\$61,863.51
Net Claim	\$61,863.51

Scott R. Klemm

Summary for Contents

Line Item Total	25.56
Replacement Cost Value	\$25.56
Net Claim	\$25.56

Scott R. Klemm

Recap of Taxes

Recap by Room

Estimate: 2021-10-22-1517

Area: Main Level		21,593.10	34.89%
Coverage: Dwelling	100.00% =	21,593.10	
Warehouse		14,005.50	22.63%
Coverage: Dwelling	100.00% =	14,005.50	
Entry/Foyer		828.24	1.34%
Coverage: Dwelling	100.00% =	828.24	
Meeting Room		6,076.75	9.82%
Coverage: Dwelling	100.00% =	6,076.75	
Kitchen		3,002.75	4.85%
Coverage: Dwelling	99.15% =	2,977.19	
Coverage: Contents	0.85% =	25.56	
Hallway 2		1,455.33	2.35%
Coverage: Dwelling	100.00% =	1,455.33	
Stairs		601.35	0.97%
Coverage: Dwelling	100.00% =	601.35	
Office		1,123.03	1.81%
Coverage: Dwelling	100.00% =	1,123.03	
Janitor Closet		379.48	0.61%
Coverage: Dwelling	100.00% =	379.48	
Womens Restroom		882.81	1.43%
Coverage: Dwelling	100.00% =	882.81	
Mens Restroom		932.38	1.51%
Coverage: Dwelling	100.00% =	932.38	
Hallway 1		784.28	1.27%
Coverage: Dwelling	100.00% =	784.28	
Back Entry		302.40	0.49%
Coverage: Dwelling	100.00% =	302.40	
Closet		484.73	0.78%
Coverage: Dwelling	100.00% =	484.73	
<hr/>			
Area Subtotal: Main Level		52,452.13	84.75%
Coverage: Dwelling	99.95% =	52,426.57	
Coverage: Contents	0.05% =	25.56	
Area: Basement			
Water heater room		2,001.99	3.23%
Coverage: Dwelling	100.00% =	2,001.99	
Misc. Storage Room		1,743.94	2.82%
Coverage: Dwelling	100.00% =	1,743.94	
Hallway		1,131.92	1.83%
Coverage: Dwelling	100.00% =	1,131.92	
Record Storage		798.60	1.29%

K-tech Kleening Systems, Inc

Coverage: Dwelling	100.00% =	798.60	
Furnace Room		874.34	1.41%
Coverage: Dwelling	100.00% =	874.34	
Storage Area/Room		2,173.03	3.51%
Coverage: Dwelling	100.00% =	2,173.03	
Under stairs storage		713.12	1.15%
Coverage: Dwelling	100.00% =	713.12	
<hr/>			
Area Subtotal: Basement		9,436.94	15.25%
Coverage: Dwelling	100.00% =	9,436.94	
<hr/>			
Subtotal of Areas		61,889.07	100.00%
Coverage: Dwelling	99.96% =	61,863.51	
Coverage: Contents	0.04% =	25.56	
<hr/>			
Total		61,889.07	100.00%

Recap by Category

Items			Total	%
CLEANING			1,677.58	2.71%
Coverage: Dwelling	@	98.48% =	1,652.02	
Coverage: Contents	@	1.52% =	25.56	
GENERAL DEMOLITION			3,756.27	6.07%
Coverage: Dwelling	@	100.00% =	3,756.27	
HAZARDOUS MATERIAL REMEDIATION			38,269.46	61.84%
Coverage: Dwelling	@	100.00% =	38,269.46	
WATER EXTRACTION & REMEDIATION			18,185.76	29.38%
Coverage: Dwelling	@	100.00% =	18,185.76	
Subtotal			61,889.07	100.00%

